



SNAPBAG® FAT-RABBIT® 8FT DOUBLE-HEX®

OPERATING INSTRUCTIONS – FIRST SETUP OUT OF THE BOX

SRXL DOPCHOICE FAT-RABBIT FRAME
SBRED8 DOPCHOICE SNAPBAG 8FT DOUBLE-HEX

SAFETY INSTRUCTIONS



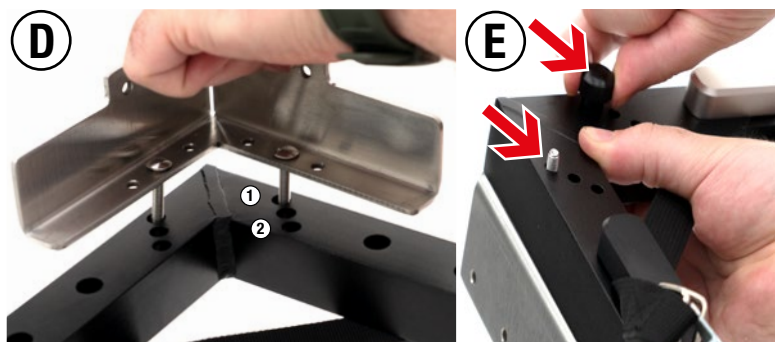
dopchoice.com/instructions/

PLEASE ALSO REFER TO THE LUMINAIRE INSTRUCTIONS REGARDING USE OF ACCESSORIES.



Installing the FAT-RABBIT Frame FIRST SET UP OUT OF THE BOX:

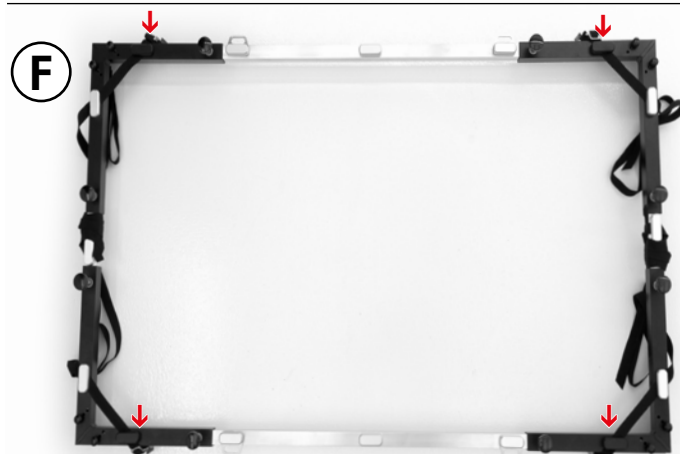
- (A) The Set comes in 4 different sub-Packs 2 packs of bars and 2 packs of corners.
- (B) Insert the 8 big screws into the 4 corners.
- (C) Open the small nut screws and disassemble the corner Adapter



(D) FLIP the Adapter over the corner and set according to the fixture you will use:

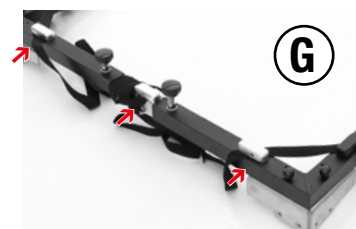
- (1) ARRI S360 // Prolight XL Panel
 - (2) DMG MAXI Double or Triple Array
 - LITEPANELS Gemini 2x1 Array 2x2
- >> latest updates and videos on www.dopchoice.com

(E) Lock the nuts, and properly tighten.



(F) Assemble the four corners to the frame making sure that the black blocks are positioned on the long side of the frame (see arrows)

(G) The metallic braces should always be positioned with the hole to the outside of the frame.





SNAPBAG® FAT-RABBIT® 8FT DOUBLE-HEX®

OPERATING INSTRUCTIONS – FIRST SETUP OUT OF THE BOX

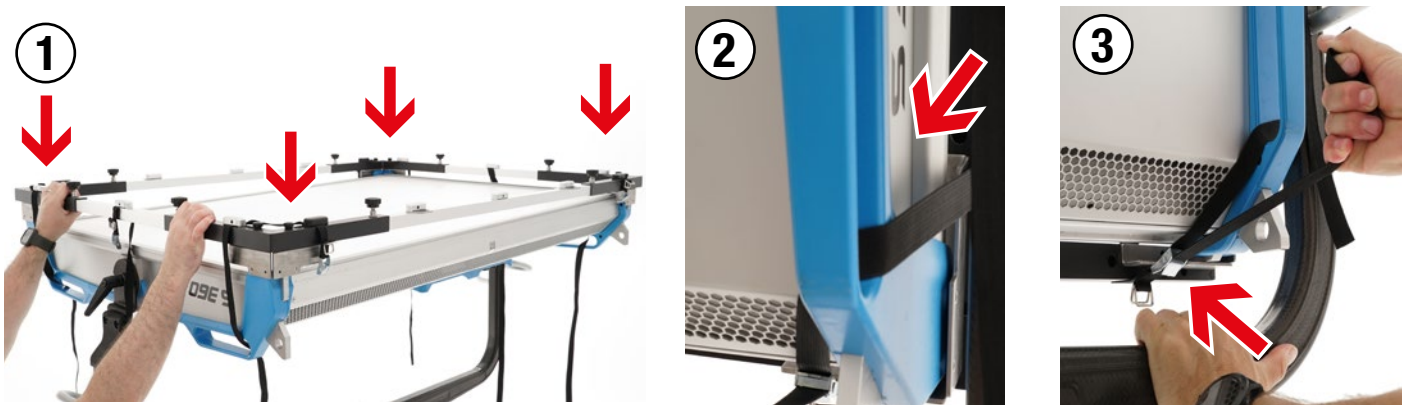
SRXL DOPCHOICE FAT-RABBIT FRAME
SBRED8 DOPCHOICE SNAPBAG 8FT DOUBLE-HEX

SAFETY INSTRUCTIONS



dopchoice.com/instructions/

PLEASE ALSO REFER TO THE LUMINAIRE INSTRUCTIONS REGARDING USE OF ACCESSORIES.



Installing the FAT-RABBIT FRAME to the SKYPANEL S360:

Tilt up the S360 as shown in Picture (1). Make sure that the frame sits properly onto the fixture.

Attach the 4 corner Belts through the handgrip of the S360 Picture (2).

Tighten up the belt until the mechanical stop and double check that the belt is under tension Picture (3)

4 x MOUNTING POINT FOR
THE SAFETY CABLE



Attach the 2 middle Belts around the Yoke of the S360 shown Picture (4) Tighten up the belt until the mechanical stop.

IMPORTANT:

4x MOUNTING POINT FOR THE SAFETY CABLE

Always secure the accessory with a suitable safety cable in case the primary mounting method fails. Picture (5)



SNAPBAG® FAT-RABBIT® 8FT DOUBLE-HEX®

OPERATING INSTRUCTIONS – FIRST SETUP OUT OF THE BOX

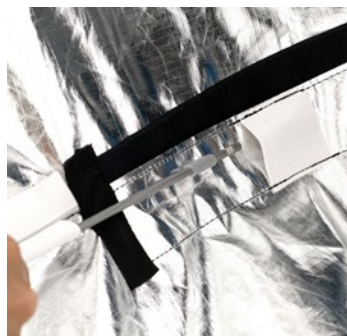
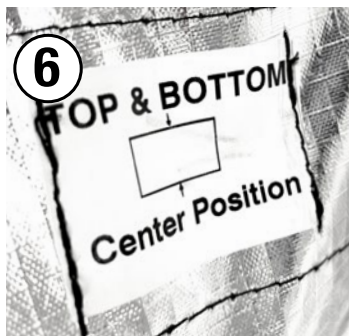
SRXL DOPCHOICE FAT-RABBIT FRAME
SBRED8 DOPCHOICE SNAPBAG 8FT DOUBLE-HEX

SAFETY INSTRUCTIONS



dopchoice.com/instructions/

PLEASE ALSO REFER TO THE LUMINAIRE INSTRUCTIONS REGARDING USE OF ACCESSORIES.



Installing the SNAPBAG 8ft Double-Hex SNAPBAG to the FAT-RABBIT Frame Picture(6):
Look for the label "TOP&BOTTOM Center Position". Take this Pole out of the pouch and attach it to the FAT-RABBIT Frame in the TOP center Position (12 o'clock). Repeat this for all 12 Poles. And tighten up the SNAPBAG by bring the Velcro Pole pad from the "RELEASE POSITION" to the "TIGHTEN UP" Position Picture (7)
Now, you can attach a Diffusion to the SNAPBAG once all 12 Poles are tightened up. Picture (8)



6 x MOUNTING POINTS FOR THE SAFETY CABLE

Always secure the accessory with a suitable safety cable in case the primary mounting method fails.

Picture (9)



Read also our additional safety & handling instructions:
www.dopchoice.com/instruction

